

EXAM JAZZ/CMS THEORY 2013

NAME.....

DATE.....

1. Build the indicated scales, using capital letters and sharp(#) or flat(b) signatures

1. F phrygian	F	Gb	Ab	Bb	C	Db	Eb	F
2. E Lydian	E	F#	G#	A#	B	C#	D#	E
3. C Dorian	C	D	Eb	F	G	A	Bb	C
4. D harm. minor	D	E	F	G	A	Bb	C#	D
5. Gb Ionian	Gb	Ab	Bb	Cb	Db	Eb	F	Gb

2. Write the key signatures (# and b) of the indicated keys in the staff.



Abmajor	Abmajor	B minor	B minor	C Locrian
---------	---------	---------	---------	-----------

3. Identify the intervals.

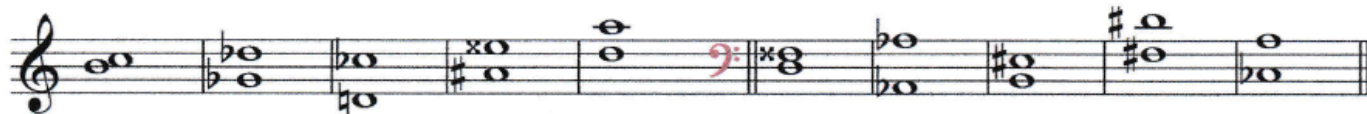
Mind the bass clef!



mi7	D5	mi3	A5	mi2	A5	P4	V5	M2	M6
-----	----	-----	----	-----	----	----	----	----	----

4a. Write the indicated intervals on the notes (P=perfect, M=major, mi=minor, A=augmented, D=diminished).

Mind the bass clef!



mi2	P5	D7	A5	P5	A3	P8	A4	M6	A6
-----	----	----	----	----	----	----	----	----	----

4b. Write the indicated intervals below the notes.

Mind the bass clef!



M6	P5	M3	mi2	mi7	A5	M6	A8	M2	A4
----	----	----	-----	-----	----	----	----	----	----

5. Identify the chords.

Mind the bass clef!



Dm7b5	C7	F#o7	Bm7	Ebmi(maj7)	A6	E7sus4	Bmaj7	Eo7	F7
-------	----	------	-----	------------	----	--------	-------	-----	----

6. Write the indicated chords in the staff.

Mind the bass clef!



G7	Dm7b5	Dbmaj7	Fm7	Ab6	C#7sus4	Adim	Bbmaj7	C#m7b5	Amaj7
----	-------	--------	-----	-----	---------	------	--------	--------	-------

7. Give the chord symbols of the indicated Seventh chords (functions).

	Function	Key	Chord symbol
example	II	in F major	= Gmi7
1	VI	in G major	= Emi7
2	VI	in C natural minor	= Abmaj7
3	III	in Db major	= Fm7
4	II	in B melodic minor	= C#m7
5	V	In Ab lydian	= Ebmaj7

8. Explain the chord progression (harmonic analysis), using function names (I, II, III etc.).

Progression	Fmaj7	A7	Dm7	G7	Cm7	B7	Bbmaj7	Gm7	Gb7	Fmaj7
Function	I	V7/VI	VI=II	V	(II)	SubV/1	I	VI = II	SubV/I	I
Key(s)	F	F	F/C	C	Bb	Bb	Bb	Bb/F	F	F